

# EX 2 BARRIERS (ref. BA) & EX 3 MILKY (ref. BM)

General conditions of use



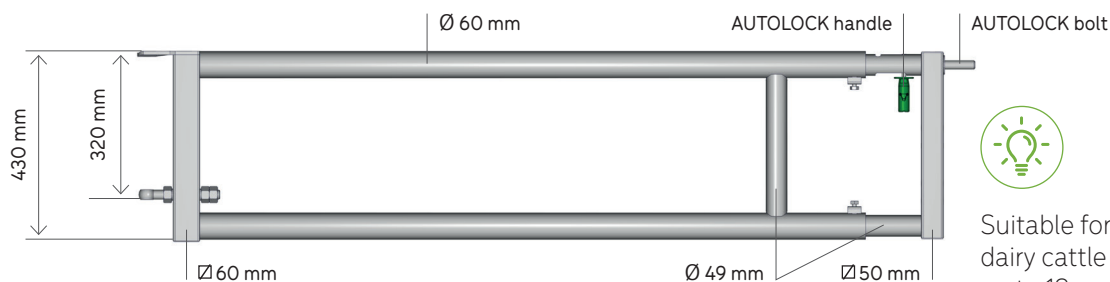
**BA1551**  
AUTOLOCK door EX 2 2/3 m



**BM0337**  
AUTOLOCK door EX 3 Milky 2/3 m

## DESCRIPTION EX 2 BARRIER

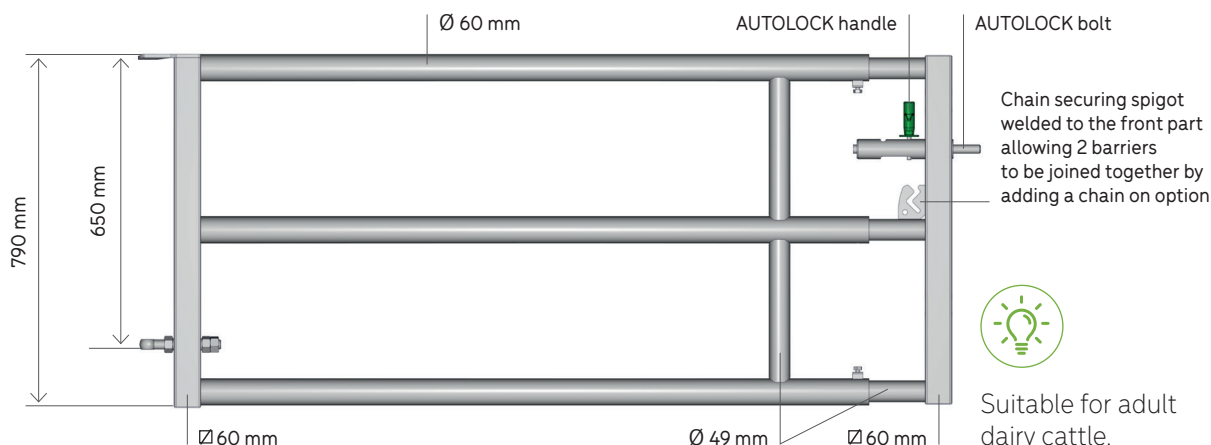
2-tube extensible barriers separate cattle groups into freestalls while allowing a scraper robot to pass freely and to introduce passage gates in dairy buildings, separation of freestalls or calf self-services.



Suitable for adult dairy cattle and cattle up to 12 months old in self-service version.

## DESCRIPTION EX 3 MILKY BARRIER

The 3-tube extensible barriers are designed for dairy buildings. They allow scraper robots to pass under the barrier while separating groups of cattle or for protection from the building doors.



Suitable for adult dairy cattle.

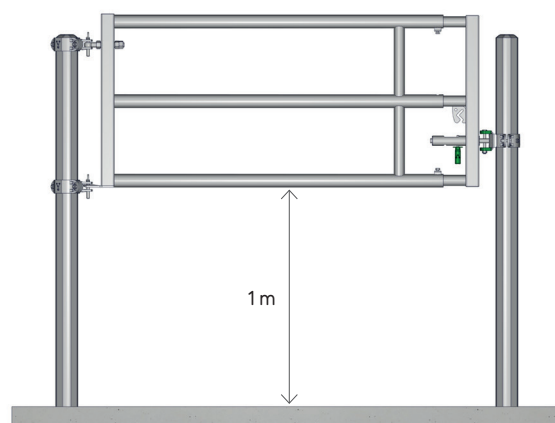
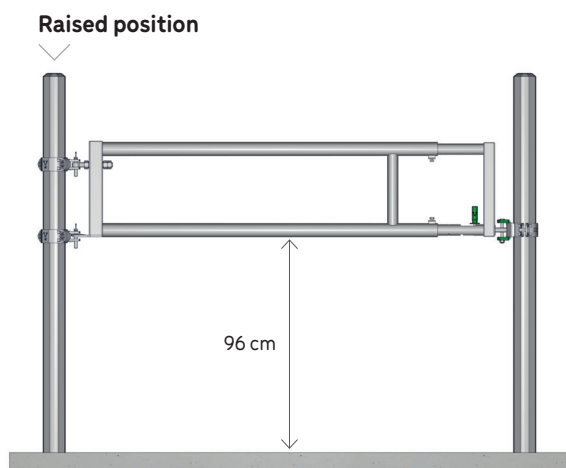
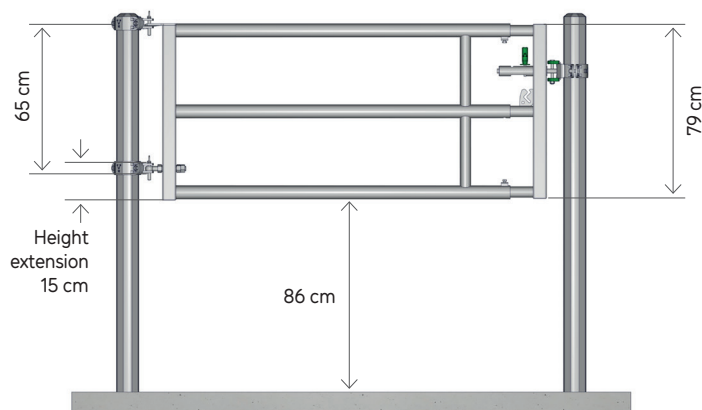
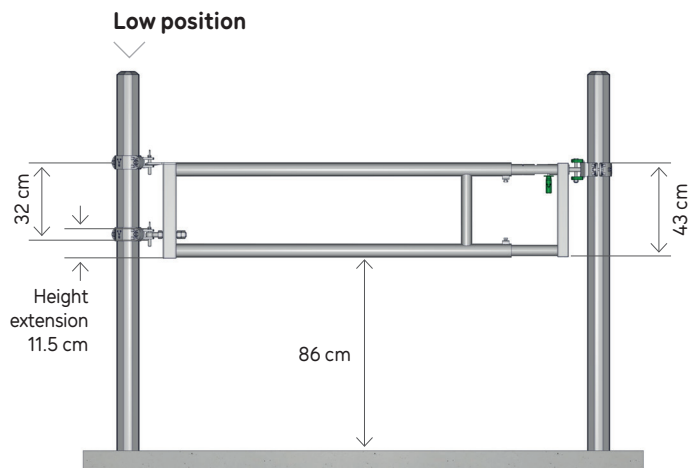
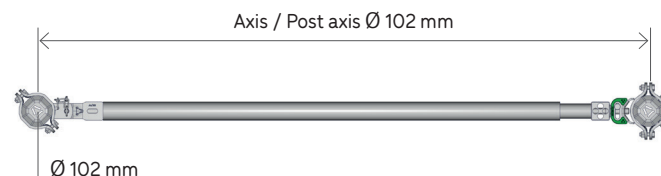
## INSTALLATION (FITTING BARRIER)

The nominal lengths are the specific dimensions JOURDAIN Axis / Post axis.

Fitting between 102 mm diameter OCTAGONAL posts is desirable for barriers length 4/5 m.

The 76 mm diameter OCTAGONAL post is only for calf HEADLOCK and 1/2 m service gates.

The barriers must be mounted in the low position so they can be raised by turning over if necessary. Height to adapt according to cleaning robot.



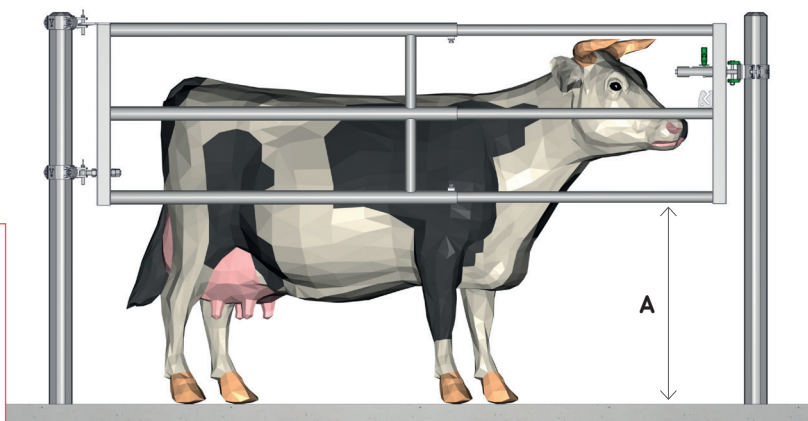
### 1 Fitting height

Indicative dimensions

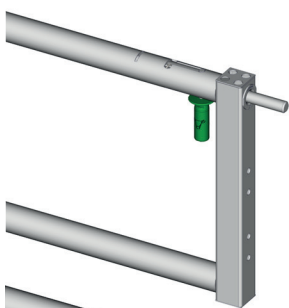
	A (EX 2)	A (EX 3 Milky)
Adult cow	86 cm	86 cm
Heifer (15 months)	70 cm	70 cm

#### CAUTION

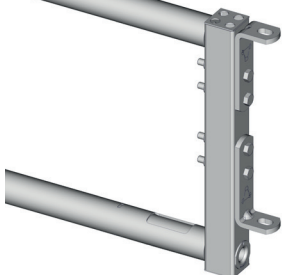
The fitting height is to be adapted according to the animals and also according to changes in the height of litter because the animal will be higher up.



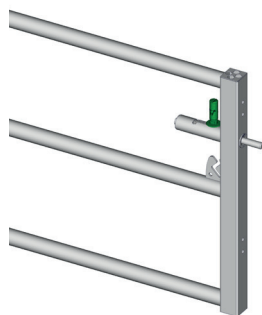
## 2 Fitting in pinned panel version or door with AUTOLOCK bolt



Front EX 2 delivered in version door with AUTOLOCK bolt



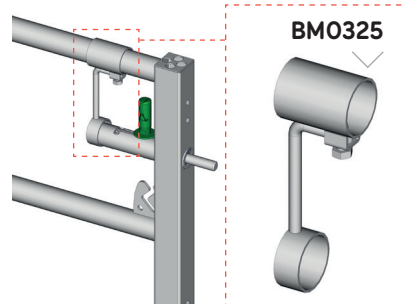
For self-service fitting, front EX 2 with bracket for panel version with the option **ref. SAC552**



Front EX 3 Milky delivered in version door with AUTOLOCK bolt



Front EX 3 Milky with bracket for version panel with the option **ref. SAC552**



**BM0325**

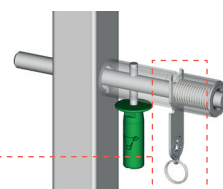
### CAUTION

No-pass safety **ref. BM0325** on option, in particular for equine assemblies.



The AUTOLOCK bolt can be fitted with the fitting tool AUTOLOCK **ref. FE1602**.

**FE1602**



## 3 Types of fixing and receiving spigots

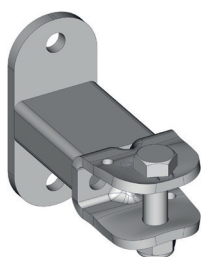
Different types of spigots and brackets are available according to the posts.

The multifix **ref. FE2017** and **FE2015** are intended for fittings on building post of the IPN type.

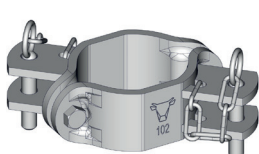
On wooden posts, do not use the multifix **FE2017**.

When fixing spigots on wooden posts, it is recommended to use a through bolt rather than a lag bolt.

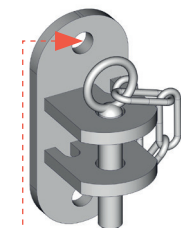
**FE2014**



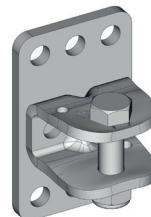
**TR4002**



**FE2002**

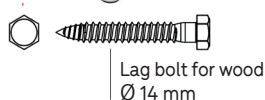


**FE2015**



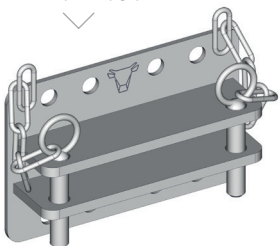
### CAUTION

Carefully check that the chains are secure over time.

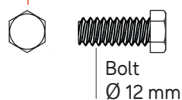
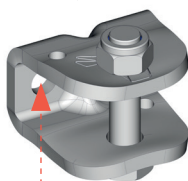


Lag bolt for wood  
Ø 14 mm

**FE2101**

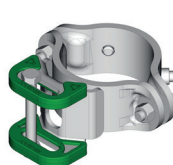


**FE2017**

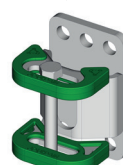


Bolt  
Ø 12 mm

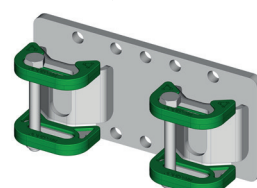
**FE3153**



**FE3013**

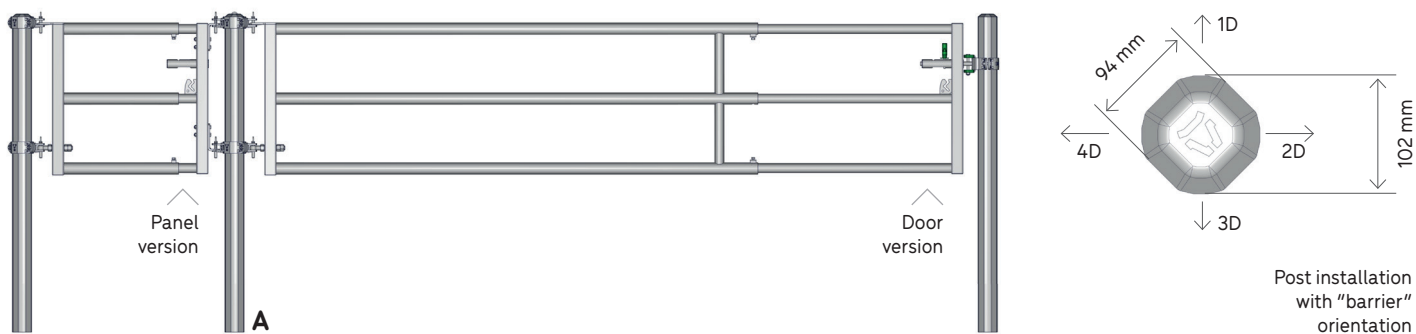


**FE3014**



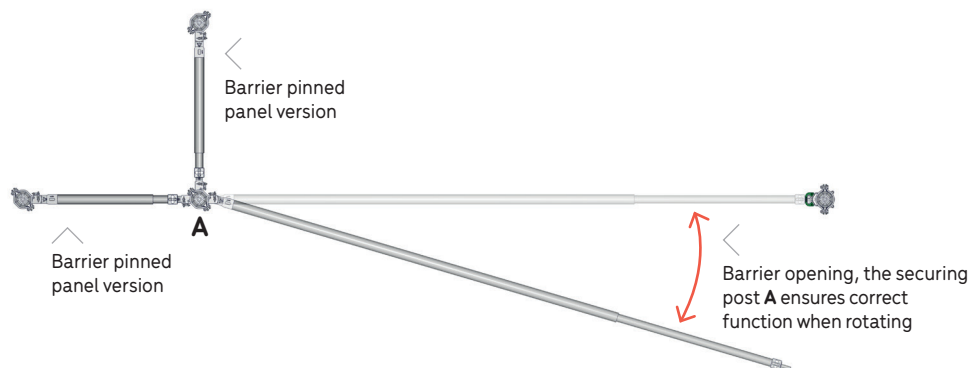
#### 4 Mounting between posts 102 mm / EX 3 Milky

With OCTAGONAL brackets 102 mm and SURLOCK® bracket.



#### CAUTION

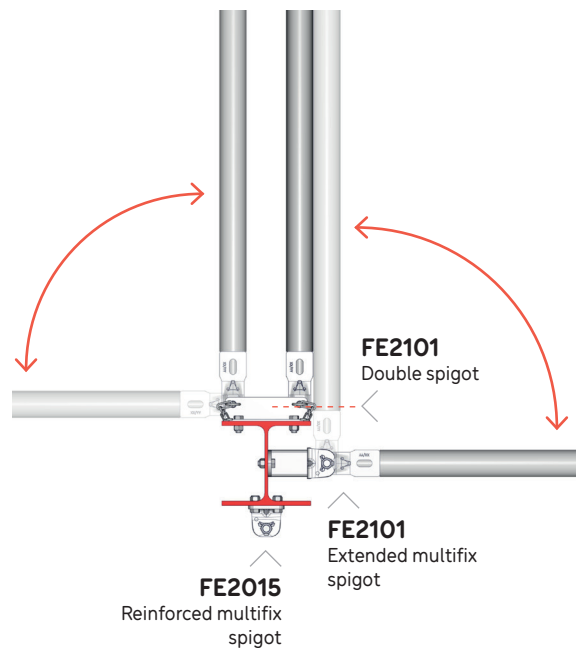
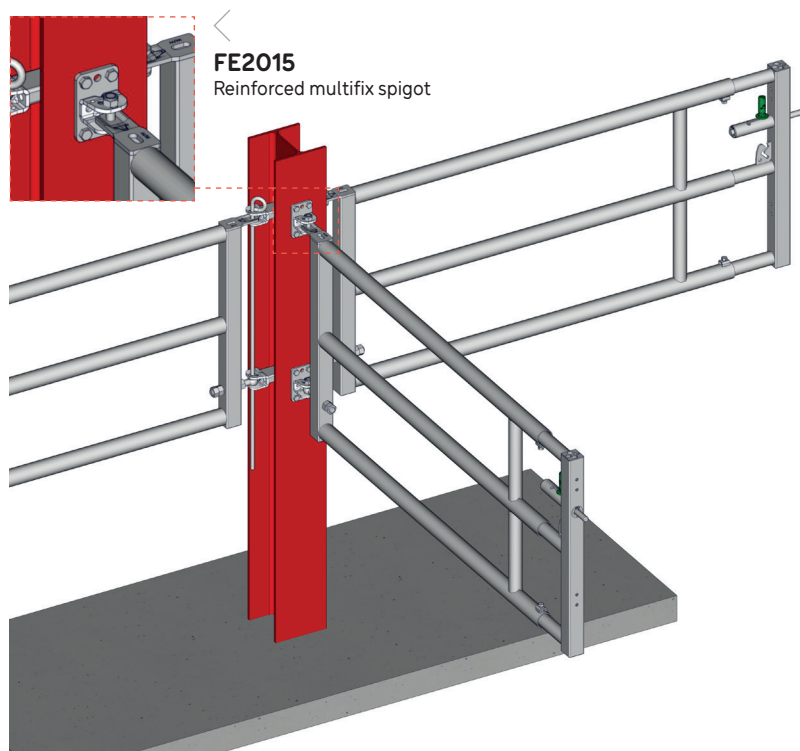
The post **A** bearing the weight of the barrier must have its load shared with other barriers in panel version, for optimal operating and SURLOCK® "slam" locking.



#### 5 Mounting between posts / EX 3 Milky

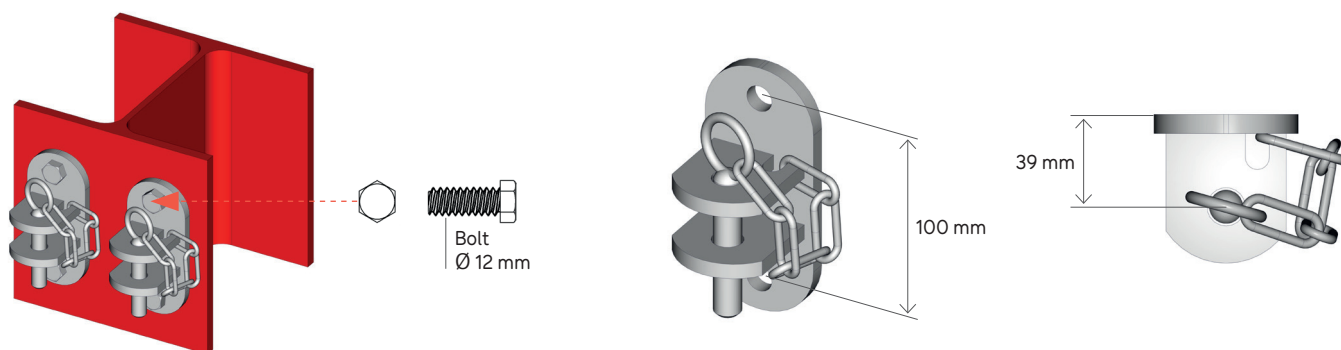
With multifix ref. FE2017, reinforced multifix spigot ref. FE2015, extended multifix ref. FE2014, single spigot ref. FE2002, double spigot ref. FE2101.

Post for drilling, fixing bolts not supplied. Assemble with brake nuts.

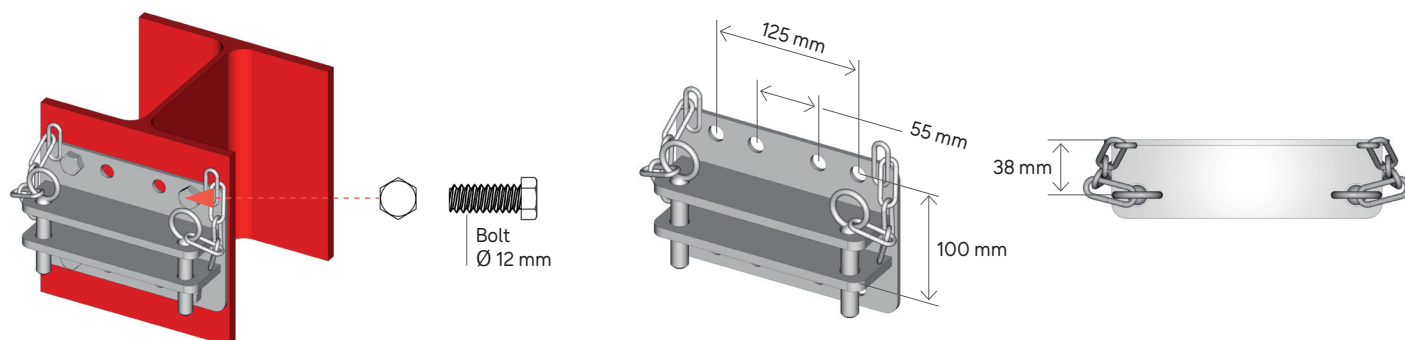




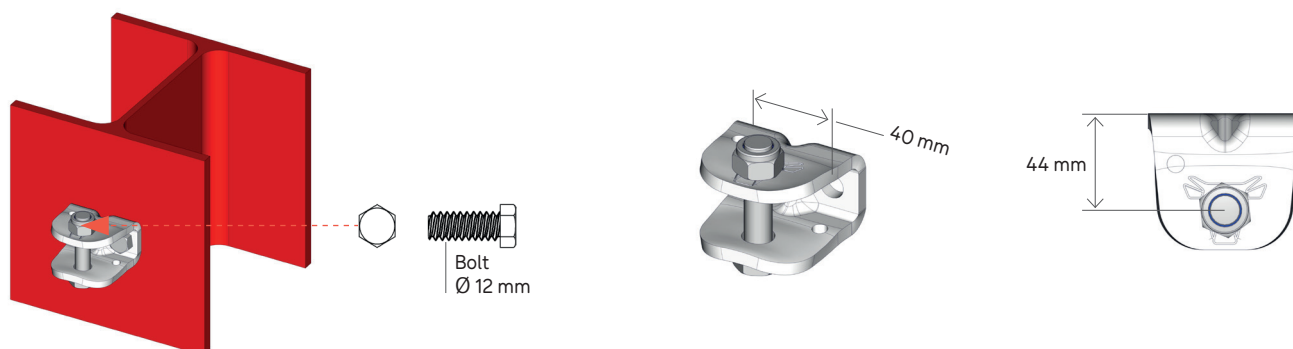
The single spigot **ref. FE2002** is fixed on the faces of the supporting post.



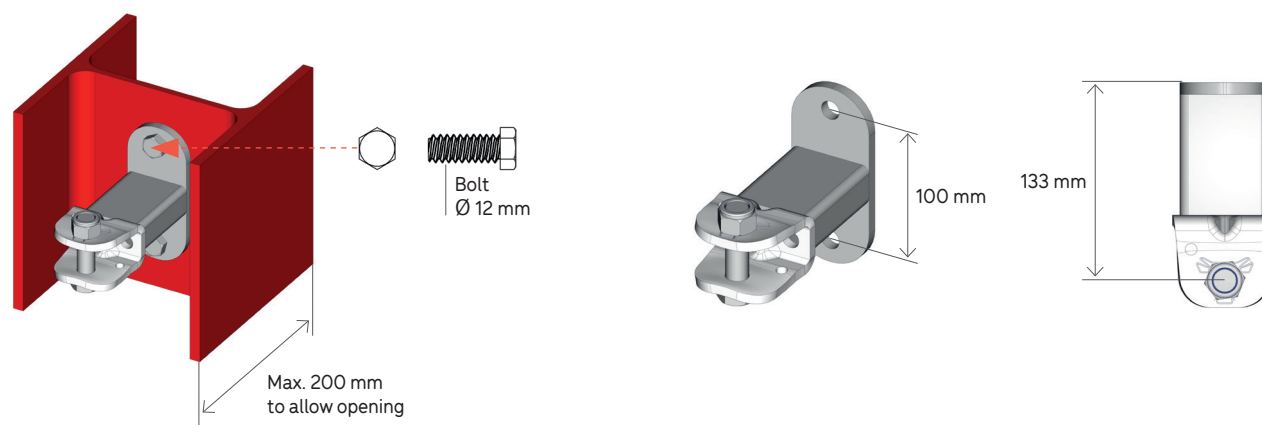
The double spigot **ref. FE2101** is fixed on the faces of the supporting post.



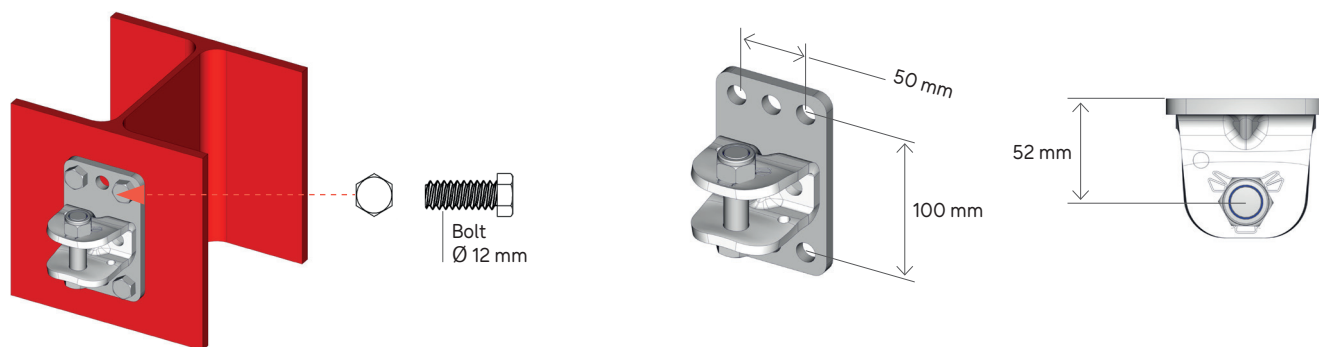
The multifix **ref. FE2017** is fixed on a small supporting I post by drilling the faces.



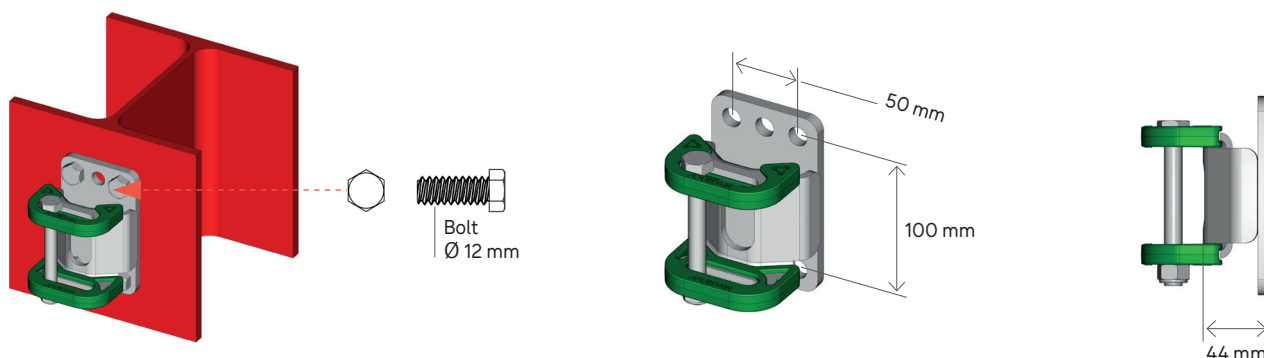
The extended multifix **ref. FE2104** is fixed on the web of the supporting post.



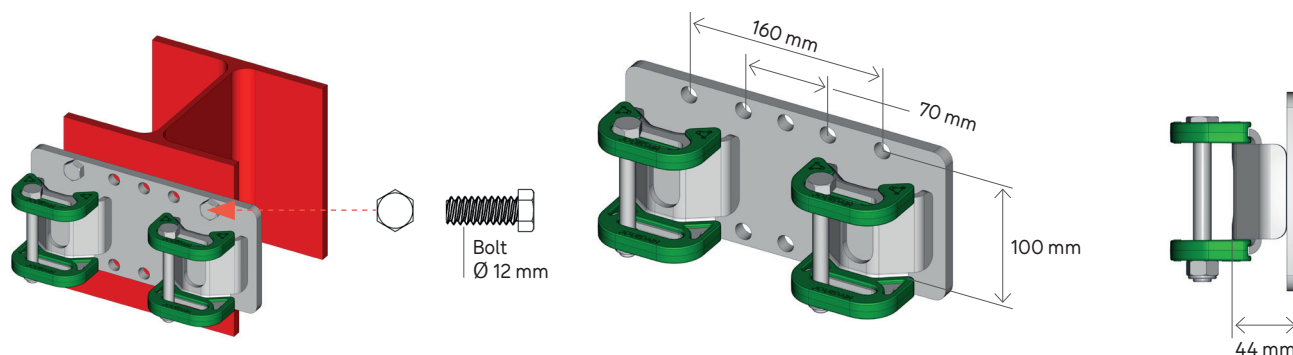
The reinforced multifix **ref. FE2017** is fixed on a small supporting I post by drilling the faces.



The SURLOCK® wall latch **ref. FE3013** is fixed on the flanges of the frame post.

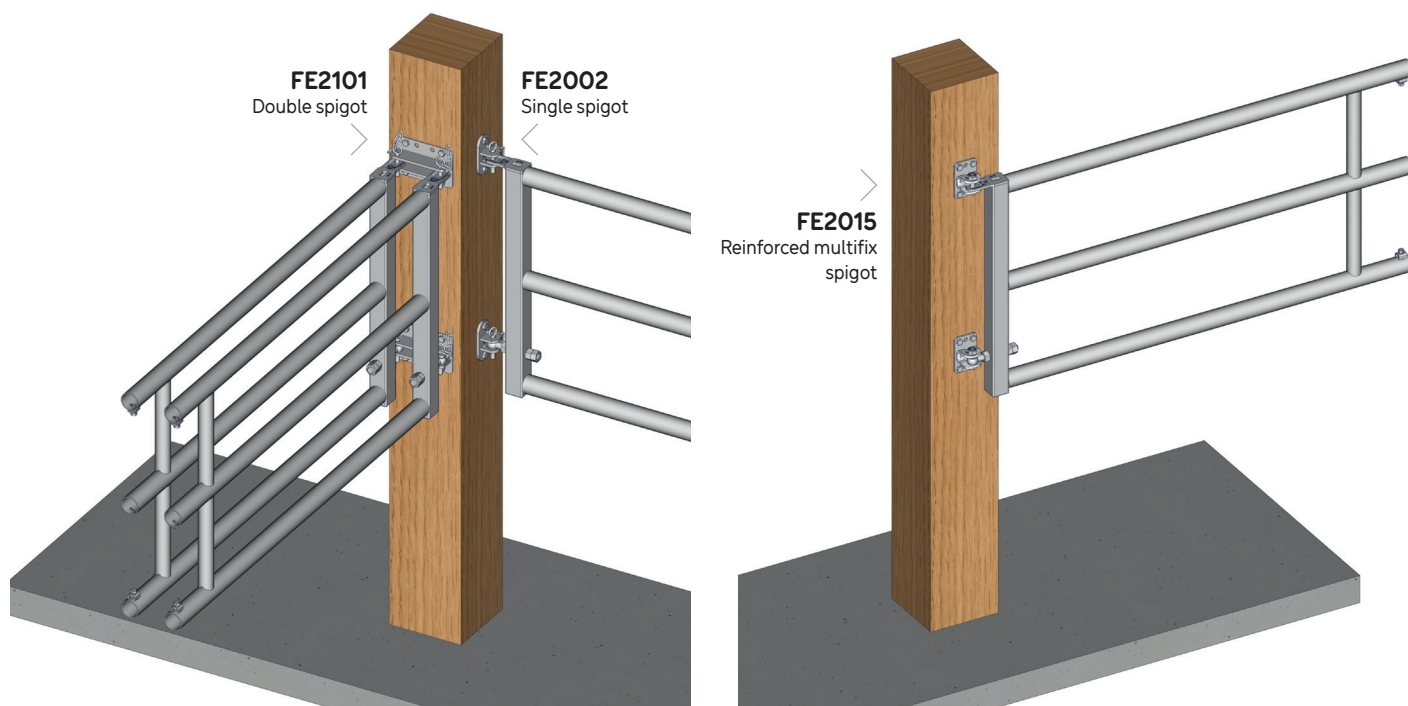


The double SURLOCK® latch **ref. FE3014** is fixed on the flanges of the frame post.

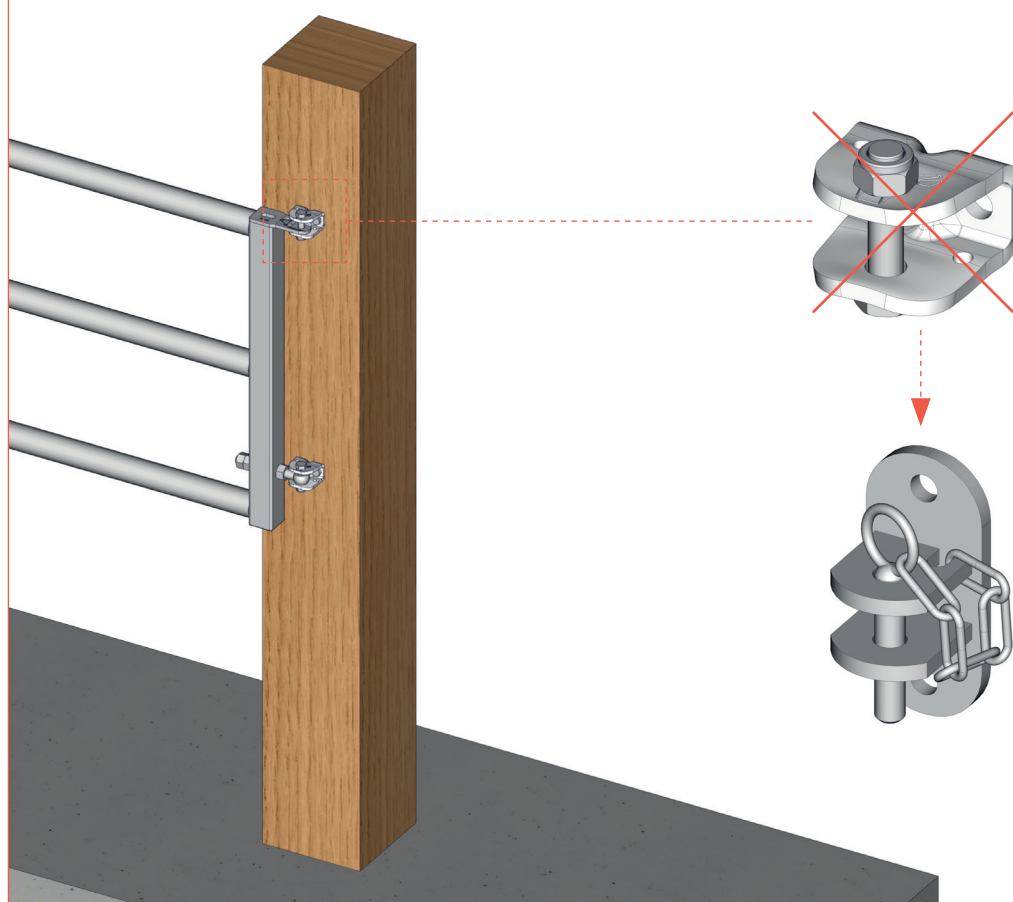


## 6 Mounting wooden posts / EX 3 Milky

With the single spigot **ref. FE2002**, double spigot **ref. FE2101**, reinforced multifix spigot **ref. FE2015**.  
Post for drilling, fastening lag bolt Ø 14 mm not supplied. Fit the lag bolts with grease.



### FITTING NOT TO BE USED



### CAUTION

Risk of pulling off.

FE2002





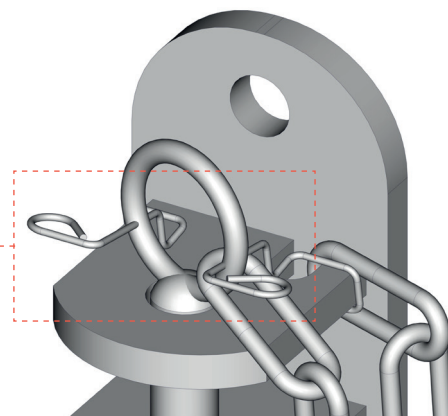
## RECOMMENDATIONS



It is recommended to use the wire guard **ref. FE2095** to prevent animals interfering with the pins.

### CAUTION

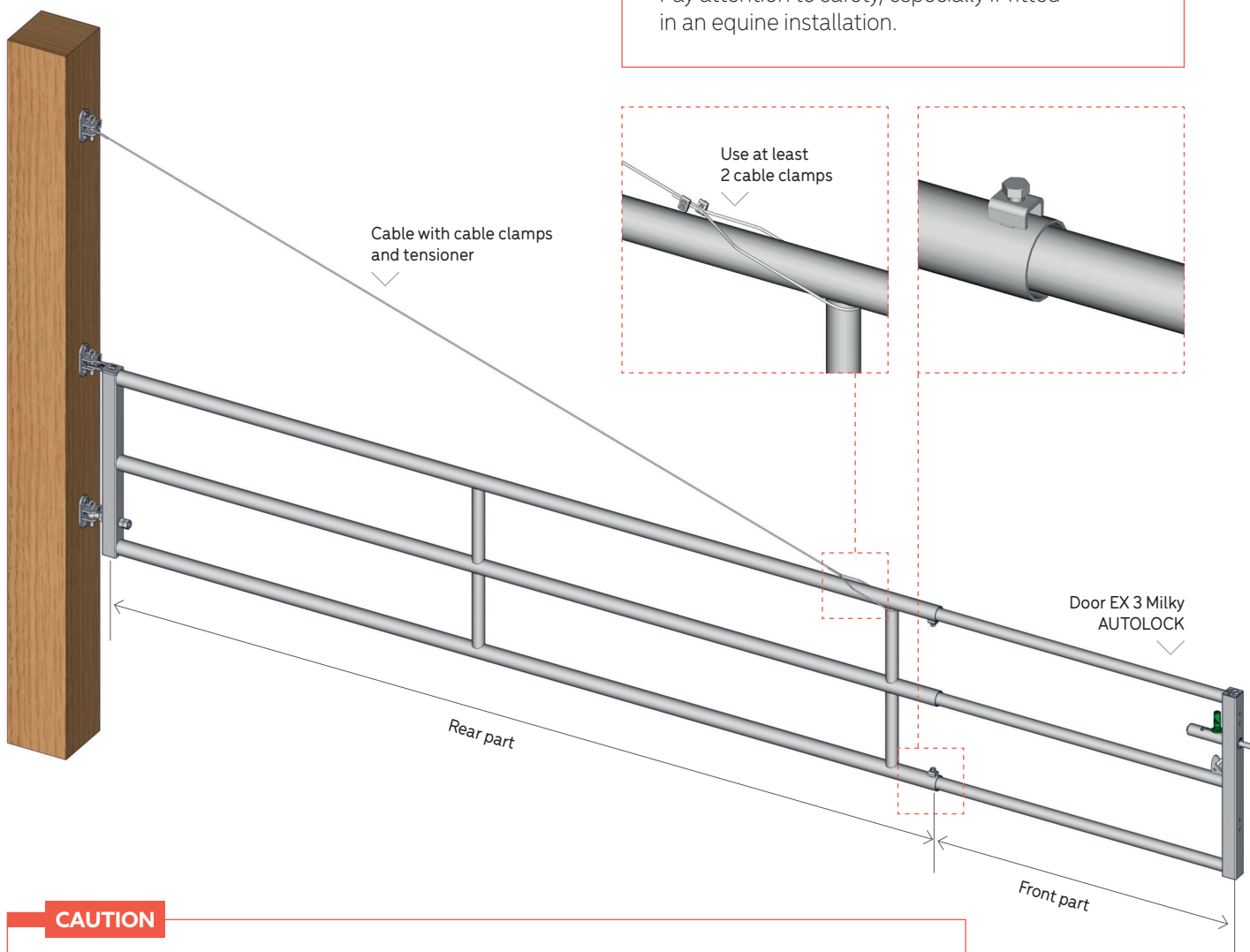
Carefully check that the chains are secure over time.



To support an extra long barrier.

### CAUTION

Pay attention to safety, especially if fitted in an equine installation.

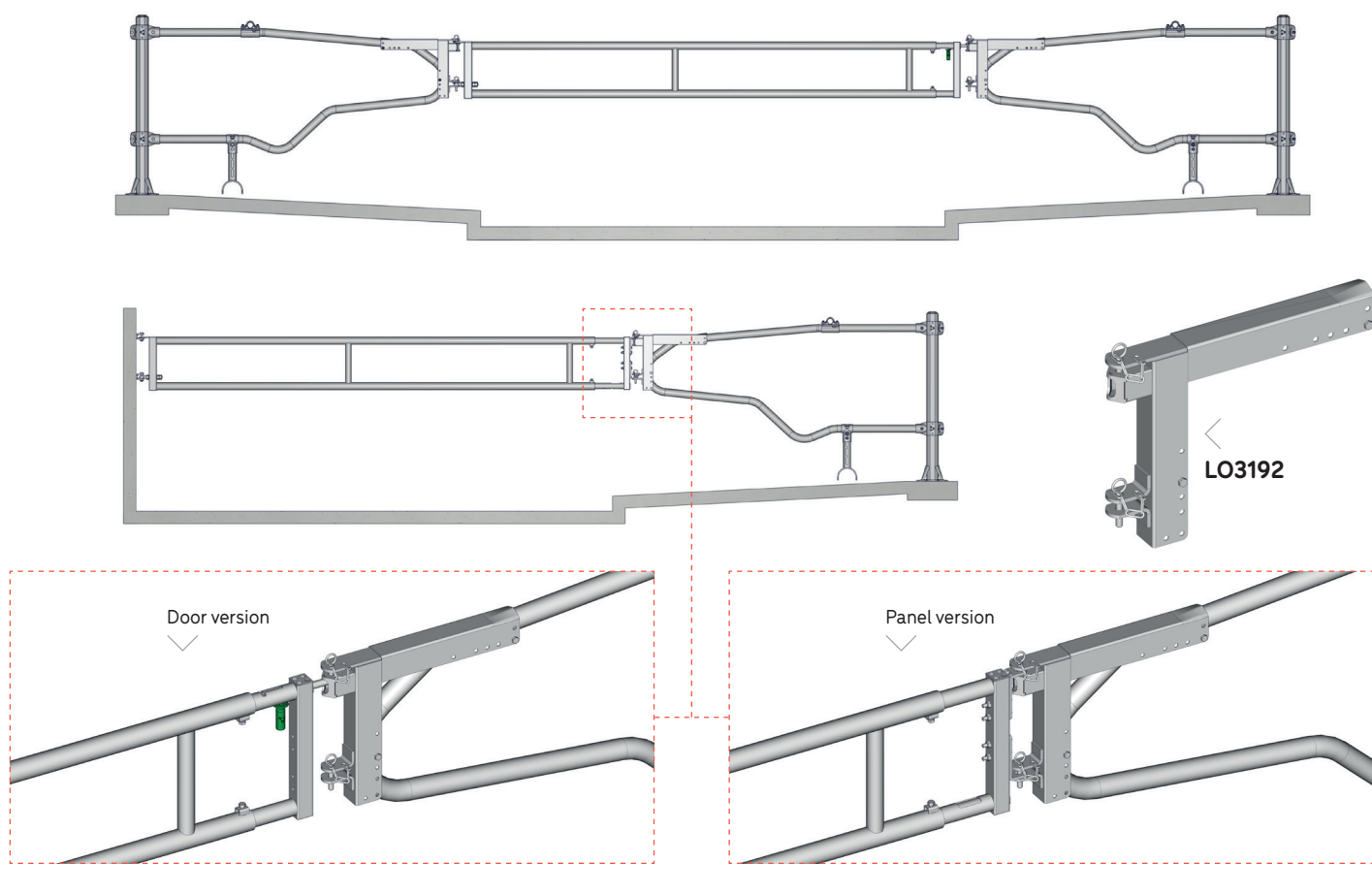


### CAUTION

An extendable barrier can be adjusted when fitting to find the right dimension, the front part must then be clamped into the rear part. This is not a barrier that can easily slide and change length.

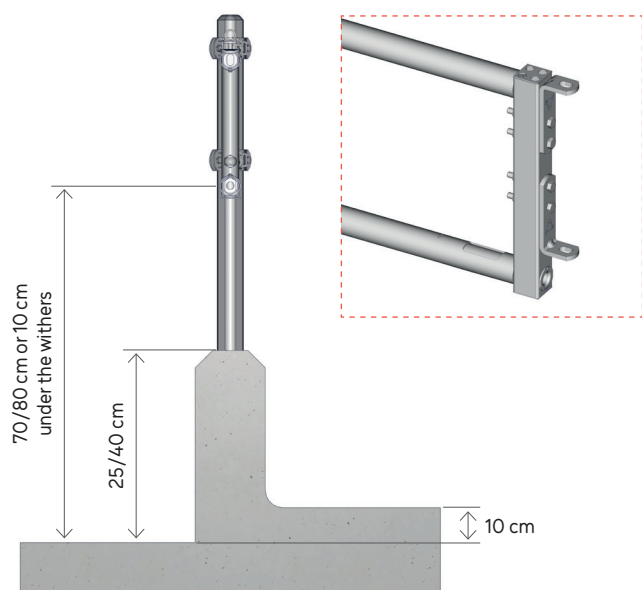
## 7 Fitting freestall separation / EX 2

This is fitted between 2 rows of freestalls or one row of freestalls and a low wall with the freestall gate adapter **ref. LO3192**. The AUTOLOCK or panel version can be used.



## 8 Fitting calf self-service / EX 2

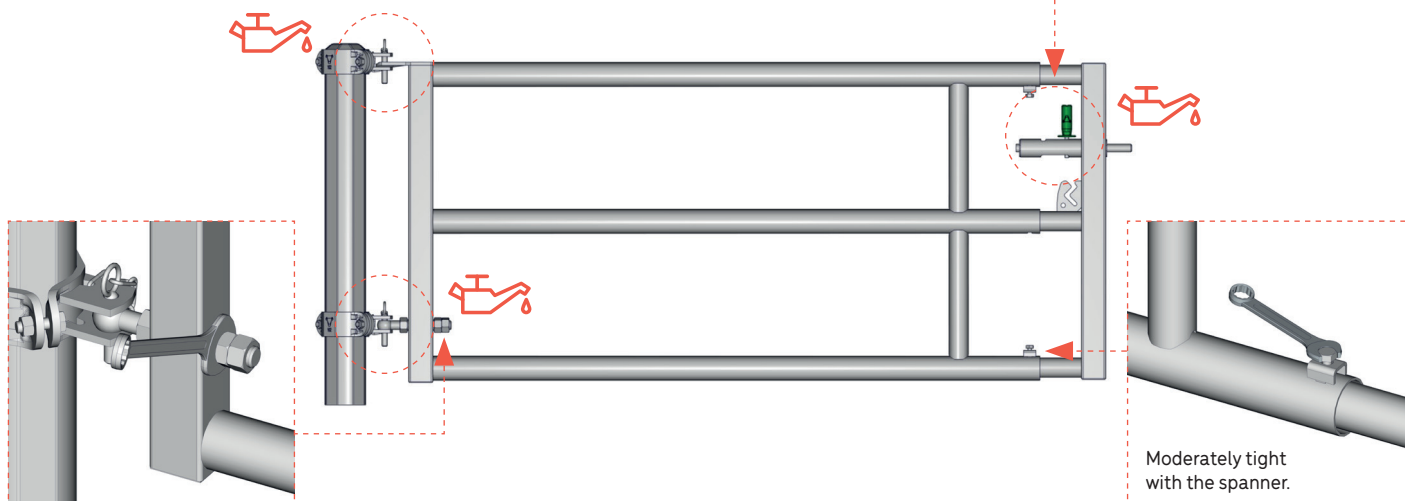
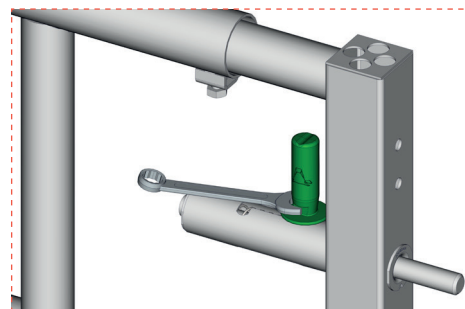
An EX 2 can also be used as a calf self-service. In this case, it can be fitted with multifix **ref. FE2017**, reinforced multifix spigot **ref. FE2015**, extended multifix **ref. FE2014**, single spigot **ref. FE2002**, double spigot **ref. FE2101**, brackets  $\varnothing 76$  mm or  $\varnothing 102$  mm according to the post used in the installation. Only in panel version using the hinges **ref. SAC552**.



## MAINTENANCE

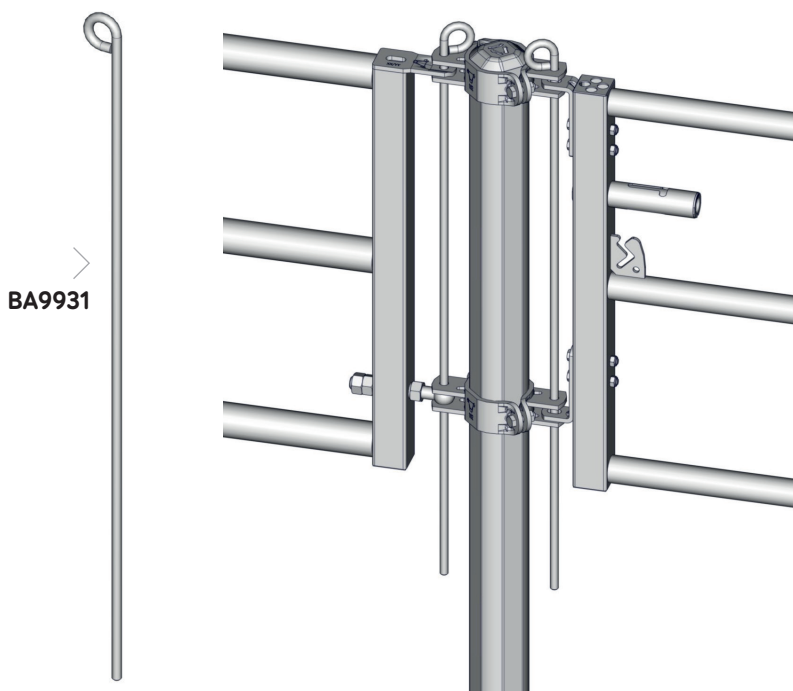
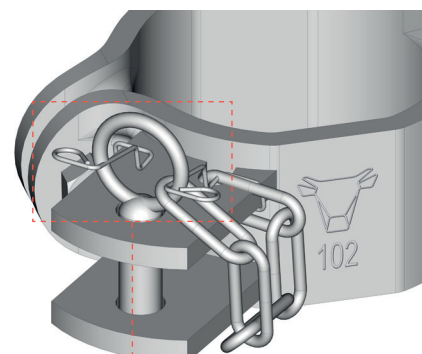


Remember to regularly lubricate the moving parts, pivot points of the fixing spigot.  
Clean the AUTOLOCK bolts and lubricate them.  
Check screw tightness.



## SAFETY

The installation and height of the barriers can be adapted according to the building and livestock. The height of the barrier can be adapted by raising by turning using lifting equipment or by using several fixing heights. Pin on option for anti-passage safety of young animals and hoof safety, especially horses, on the rear and front in panel version.



FE2095

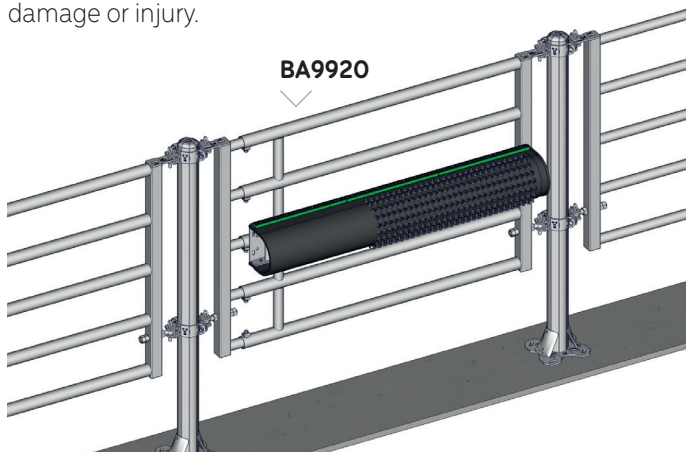


Remember to check the barrier fittings, they must remain in place. If the animals interfere with the pins, remember to put them back in place and to fit the wire guard on option **ref. FE2095**.



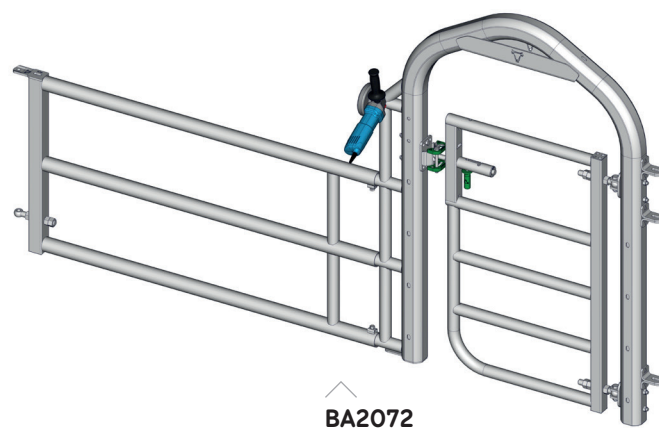
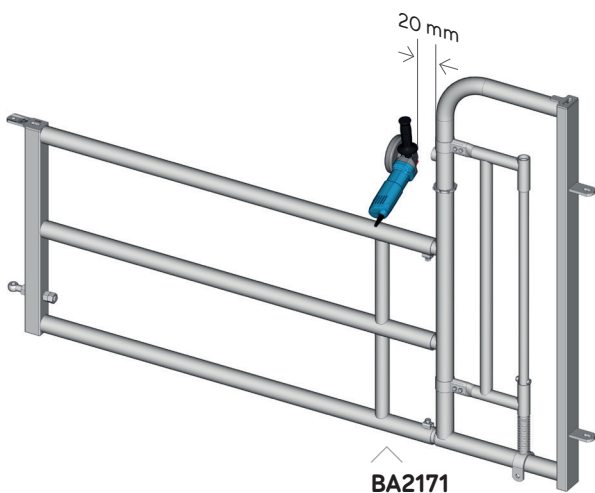
## Grat'O Gratte

The regular installation of Grat'O Gratte brushes is a source of comfort for animals and discourages them from scratching on equipment and causing damage or injury.



## Man passage gate

With the barrier EX 3 Milky, a duo EX 4 man passage gate can be fitted **ref. BA2072** or **BA2082** or a wide passage EX 4 **ref. BA2171** and to cut the upper tube, removing cutting burr.

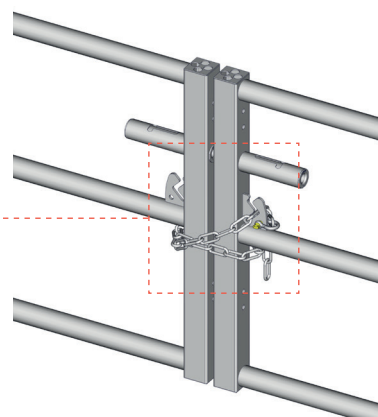
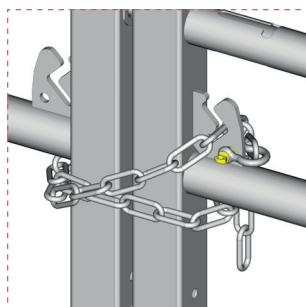


### CAUTION

It is recommended to provide as many man passage gates as possible to allow for a safety escape for the farmer without having to open or climb over the barrier.



On option, on the barrier EX 3 Milky a chain can be fixed **ref. BA5051** with a clevis **ref. BA5052** to provide safety locking, or to fix 2 barriers together face to face.





## CAUTION

Animals with collars are a potential source of accidents in the equipment, remember to check collar tightness according to the growth of the animal.  
Use a collar with a safety device.

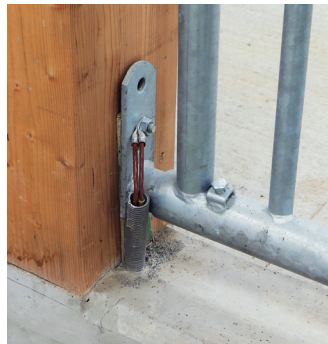
Despite the great care we take in the design of our products, always striving for optimal animal well-being and maximum safety levels. JOURDAIN cannot be held liable in the event of any accidents involving animals.

Knowledge and daily monitoring of the cattle by the cattle farmer remain the most secure solutions to prevent accidents.

## CORROSION

Remember to earth your equipment for safety and to limit corrosion. It is possible to fit a heat-shrinking sheath **ref. TR0101** or a themolacquered post to limit corrosion.

The accumulation of silage on the Headlock wall can cause corrosion of the lower longeron.



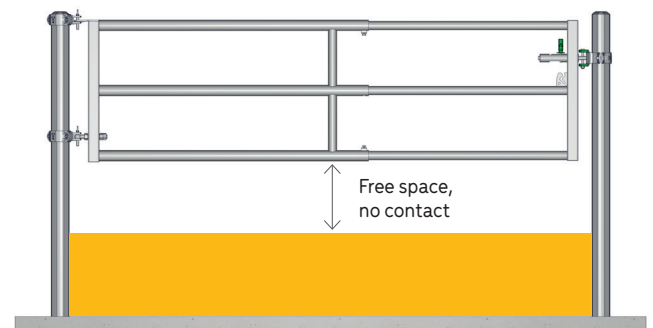
## CAUTION



There is frequently corrosion in farm buildings due to aggressive products and the environment. Remember to brush and paint with bituminous paint as soon as the first traces appear.

## CAUTION

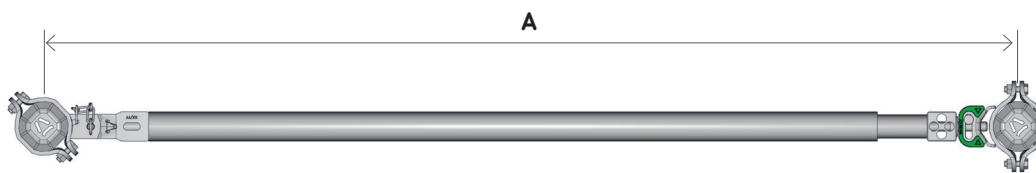
Caution, the accumulation of manure must not touch the barrier, otherwise raise it.



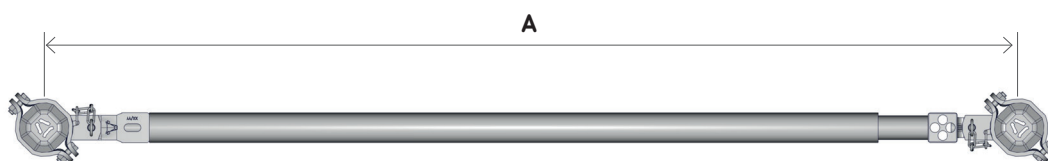


## TECHNICAL LITERATURE

NOTE: The dimensions are given in millimetres (mm) for JOURDAIN 102 mm posts.



	Ref.	Designation	A (mm)	
			Min. distance between posts	Max. distance between posts
EX 2	BA1550	AUTOLOCK door EX 2 1/2 m	1,050	2,049
	BA1551	AUTOLOCK door EX 2 2/3 m	2,050	3,049
	BA1552	AUTOLOCK door EX 2 3/4 m	3,050	4,049
	BA1553	AUTOLOCK door EX 2 4/5 m	4,050	5,049
	BA1554	AUTOLOCK door EX 2 5/6 m	5,050	6,049
EX 3 Milky	BM0336	AUTOLOCK door EX 3 Milky 1/2 m	1,050	2,049
	BM0337	AUTOLOCK door EX 3 Milky 2/3 m	2,050	3,049
	BM0338	AUTOLOCK door EX 3 Milky 3/4 m	3,050	4,049
	BM0339	AUTOLOCK door EX 3 Milky 4/5 m	4,050	5,049
	BM0340	AUTOLOCK door EX 3 Milky 5/6 m	5,050	6,049



	Ref.	Designation	A (mm)	
			Min. distance between posts	Max. distance between posts
EX 2	BA1550 + SAC552	Panel EX 2 1/2 m	1,050	2,049
	BA1551 + SAC552	Panel EX 2 2/3 m	2,050	3,049
	BA1552 + SAC552	Panel EX 2 3/4 m	3,050	4,049
	BA1553 + SAC552	Panel EX 2 4/5 m	4,050	5,049
	BA1554 + SAC552	Panel EX 2 5/6 m	5,050	6,049
EX 3 Milky	BM0336 + SAC552	Panel EX 3 Milky 1/2 m	1,050	2,049
	BM0337 + SAC552	Panel EX 3 Milky 2/3 m	2,050	3,049
	BM0338 + SAC552	Panel EX 3 Milky 3/4 m	3,050	4,049
	BM0339 + SAC552	Panel EX 3 Milky 4/5 m	4,050	5,049
	BM0340 + SAC552	Panel EX 3 Milky 5/6 m	5,050	6,049

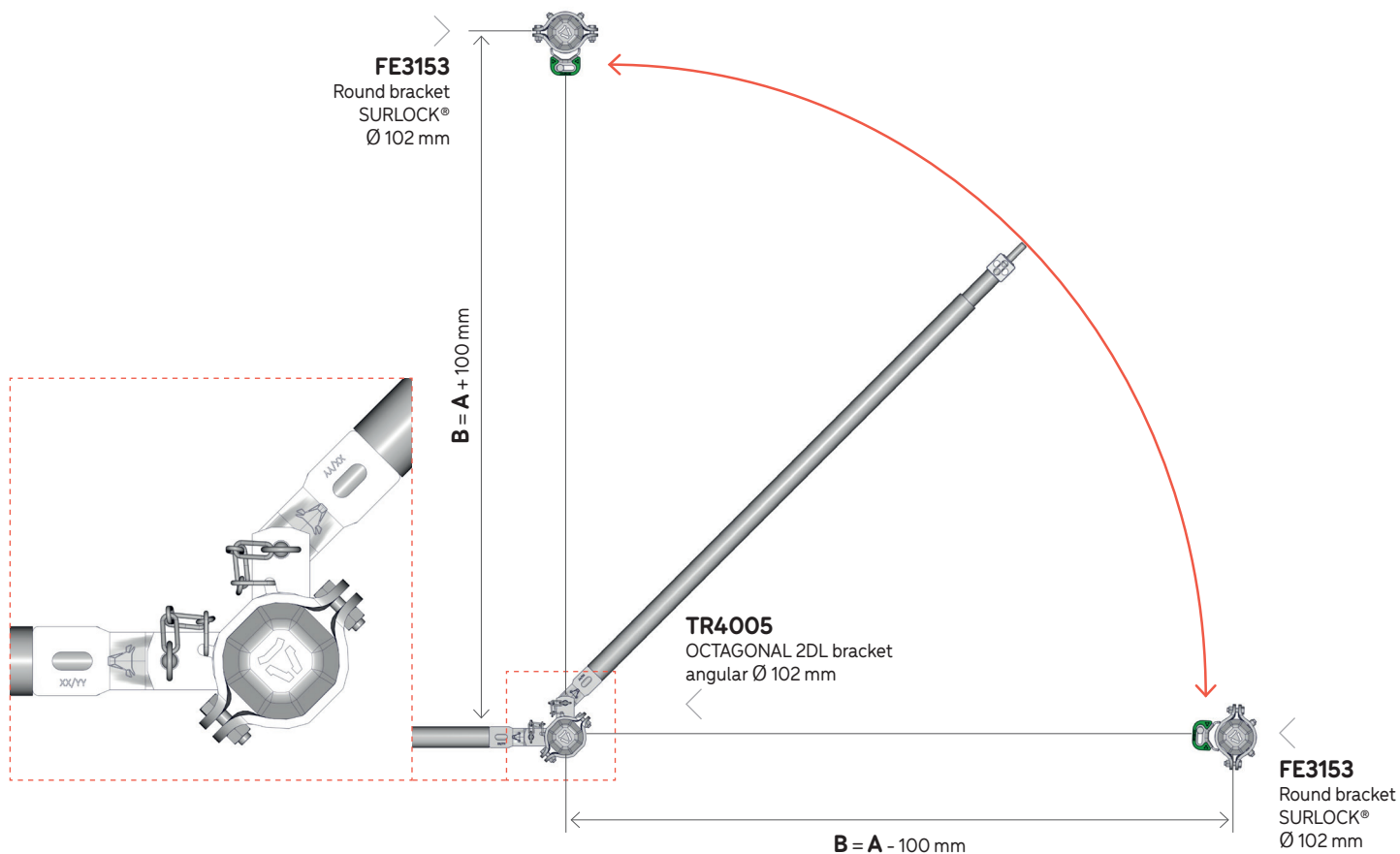


**JOURDAIN**  
N°1 MONDIAL DU TUBULAIRE BOVIN

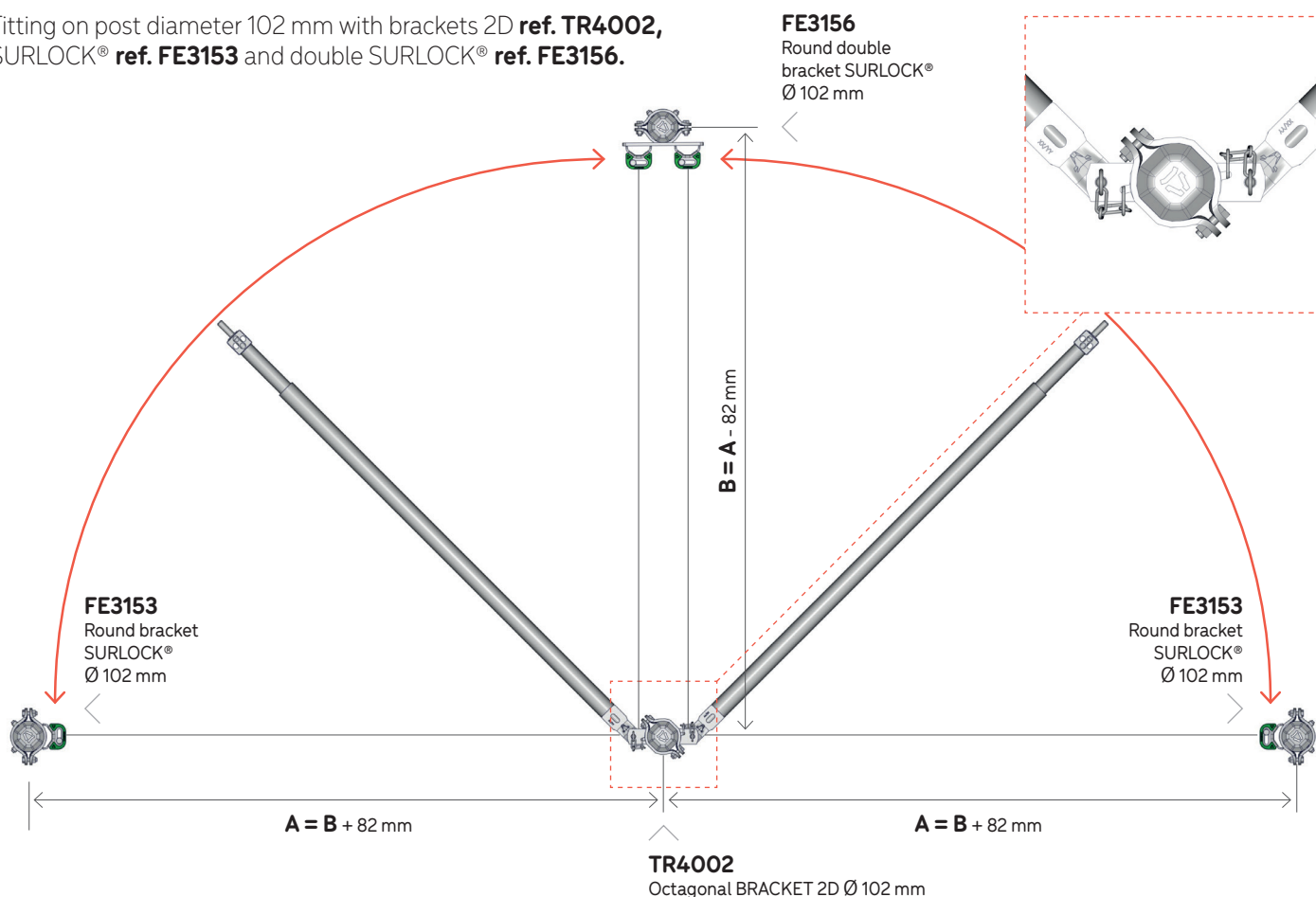


always  
**INNOVATING**

Fitting on posts diameter 102 mm with brackets 2DL **ref. TR4005** and SURLOCK® **ref. FE3153**.



Fitting on post diameter 102 mm with brackets 2D **ref. TR4002**, SURLOCK® **ref. FE3153** and double SURLOCK® **ref. FE3156**.







The "Made in France" logo is a label that manufacturers or distributors may attach to their products under certain conditions in order to attest to their French origin:

- if a significant part of its value is derived from one or several production phases located in France,
- or if it has undergone its final substantial processing in France (source: [www.economie.gouv.fr](http://www.economie.gouv.fr)).

For JOURDAIN, this definition of "Made in France" is not enough, which is why we have created our own logo, certifying a much stronger commitment:

- the French manufacture of our products guarantees total control of design, manufacture, quality control and logistics in house, on our Escrennes site (in the central French department of Loiret).

AGENCEZEBRA.COM - Update: 09/2024



Find all  
our products



[WWW.JOURDAIN-GROUP.COM](http://WWW.JOURDAIN-GROUP.COM)

always  
INNOVATING

EX 2 BARRIERS (ref. BA)  
8 EX 3 MILKY (ref. BM) | GCU

15/15